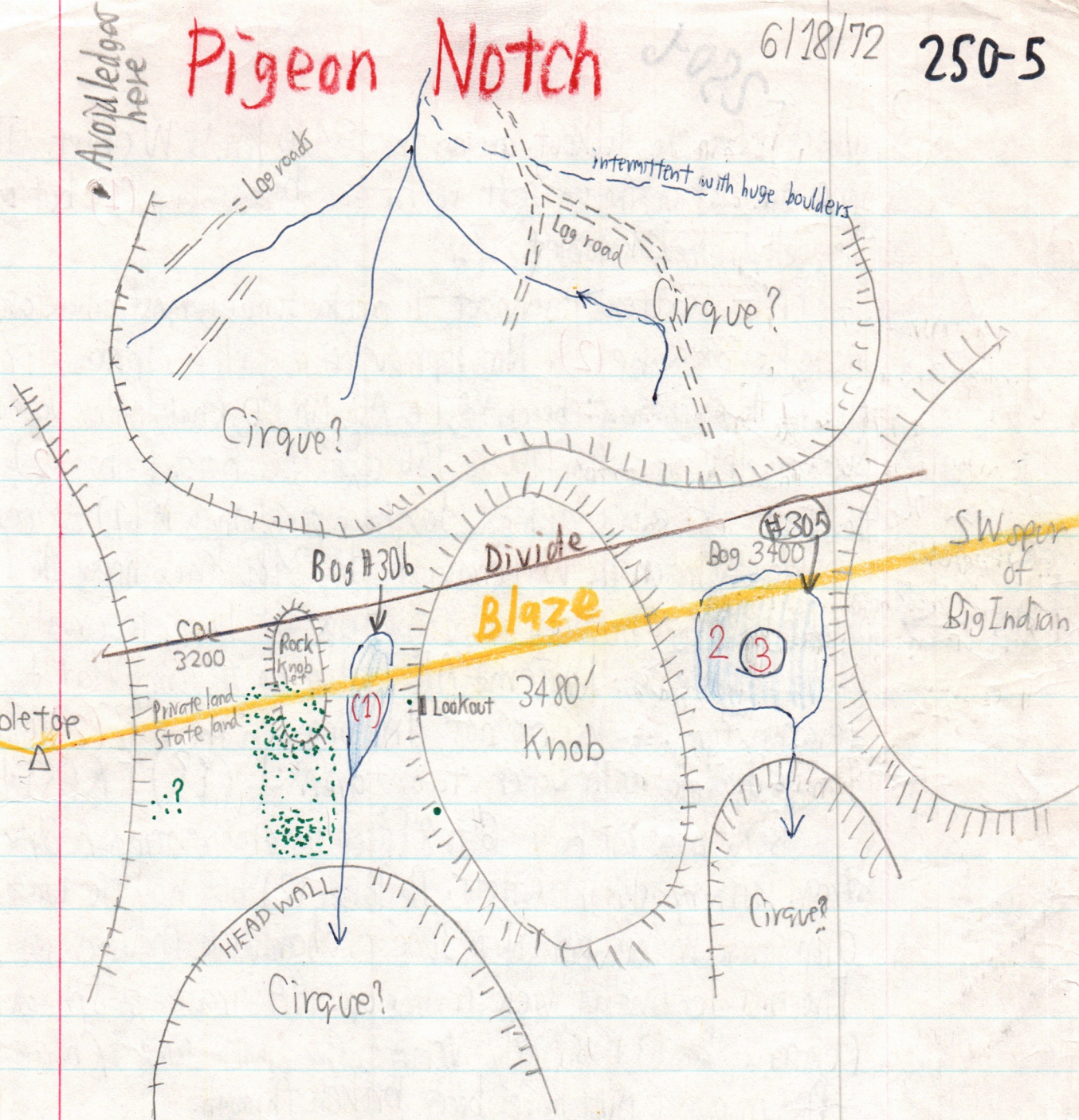
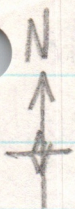


Pigeon Notch

6/18/72 250-5

Avoid ledge here



(green dots)
Spruce - several dozen trees in the notch, up to 80 ft high and double the height of the canopy. About half the spruce dead, the living half not flagged and thus not apparently suffering great NW wind stress. Reproduction adequate to replace dying trees, the population probably holding steady. Several spruce scattered on the E slope of Doubletop as seen from the lookout on knob 3480. Two dead spruce (green dots)

-2506

also seen from the lookout are on the 3480 knob W crest. The spruce are not on the wettest soils of the boggy swamp (1) but mostly on the well-drained knoblet. Fir

Fir - Scattered throughout the notch knobs, most abundant in the big bog swamp (2). Not reproducing as well as spruce in the notch. Also in the notch area: beech, YB, White Ash, MN, MO, Rhododendron, Vaccinium and ^{elm} Sugar maple come within 100 to 150 ft ^{elev.} of the notch + bog (2) and the log roads. almost as high. Saxifraga pennsylvanica in (1) + Ribes Triste.

Early June Frost →

Wood fern on the W terrace of the 3480 knob near the lookout show ^{NO!} desiccation symptoms as frond tips are limp, recurved + the pinnae curling. NMFem + AFF also on the sunny flat + drooping. Veratrum ^{was} turning yellow but not drooping. In the bog (2) cinnaon ferns drooping as the water table dropped. (??) FROST!

Both bogs are only 6" to 8" deep on fragmenting bedrock. Both drain south by sluggish outlets. The larger (2) bog had its water table drop several inches probably in June as hardwoods show no symptoms. Fir first leaching out were curling up. AA growing in Sphagnum mounds. Center bog (3) is mostly Nemopanther with some Rhododendron. Plug in outlet must have been broken through.

Impatiens seeds germinate only in the wettest spots. No germination occurs on better drained sites above where other plant competition is absent or nil. At the edges of springs, Impatiens may germinate but plants grow very slowly + may not mature.